

# FOR SALE

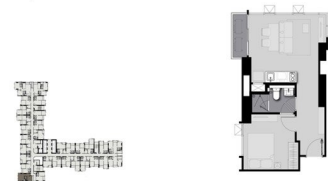
## RESIDENTIAL - CONDOMINIUM 398SQFT (37SQM) / CALL FOR PRICE!

+65 9100 0193



1 - Bedroom

TYPE C  
398 sqft



### RESIDENTIAL - CONDOMINIUM

CHOM PHON, CHATUCHAK, 10900, BANGKOK,  
BANGKOK, THAILAND

- LISTING ID: SGLD87066479
- TENURE: FREEHOLD
- TITLE: N/A
- SIZE BUILT-UP: 398SQFT (37SQM)
- SIZE LAND: 7.512AC (3.040HA)
- NO. OF FLOORS: 44
- FLOOR/LEVEL: N/A - MIDDLE FLOOR
- BED ROOMS: 1
- BATH ROOMS: 1
- MAIDS ROOMS: N/A
- PARKING SPACES: N/A
- LAYOUT TYPE: OTHER
- FACING: N/A
- VIEWING: N/A
- SELLING PRICE: **CALL FOR PRICE!**
- COMPLETION YEAR: 2021
- CONDITION: ORIGINAL CONDITION
- FURNISHING: PARTIALLY FURNISHED
- LISTING DATE: JUL 17, 2019

### LIFE LADPRAO VALLEY

Partially furnished, 1 bedroom, 1 bathroom Condominium for Sale. Completed in 2021, this unit is in original condition. Others: Freehold Location: Bangkok, Thailand

#### INTERIOR FACILITIES

- Air-Conditioning
- Balcony

#### OTHER INTERIOR FEATURES

- Cooker Hob/Hood

#### EXTERIOR FACILITIES

- 24 Hours Security
- Business Centre
- Covered Car Park
- Function Room

VISIT THIS PROPERTY AT: <https://www.propertyinvest.sg/property/SGLD87066479>

### GEOK MING SEAH - HUTTONS ASIA PTE LTD

3 Bishan Place #05-01 CPF Bishan Building  
D20, 579838, Singapore

+65 9100 0193  
WhatsApp Me

geokmingseah@gmail.com

<https://www.propertyinvest.sg>



Scan QR Code

**Huttons** Call for Viewing  
The Agency of Choice +65-91000193